

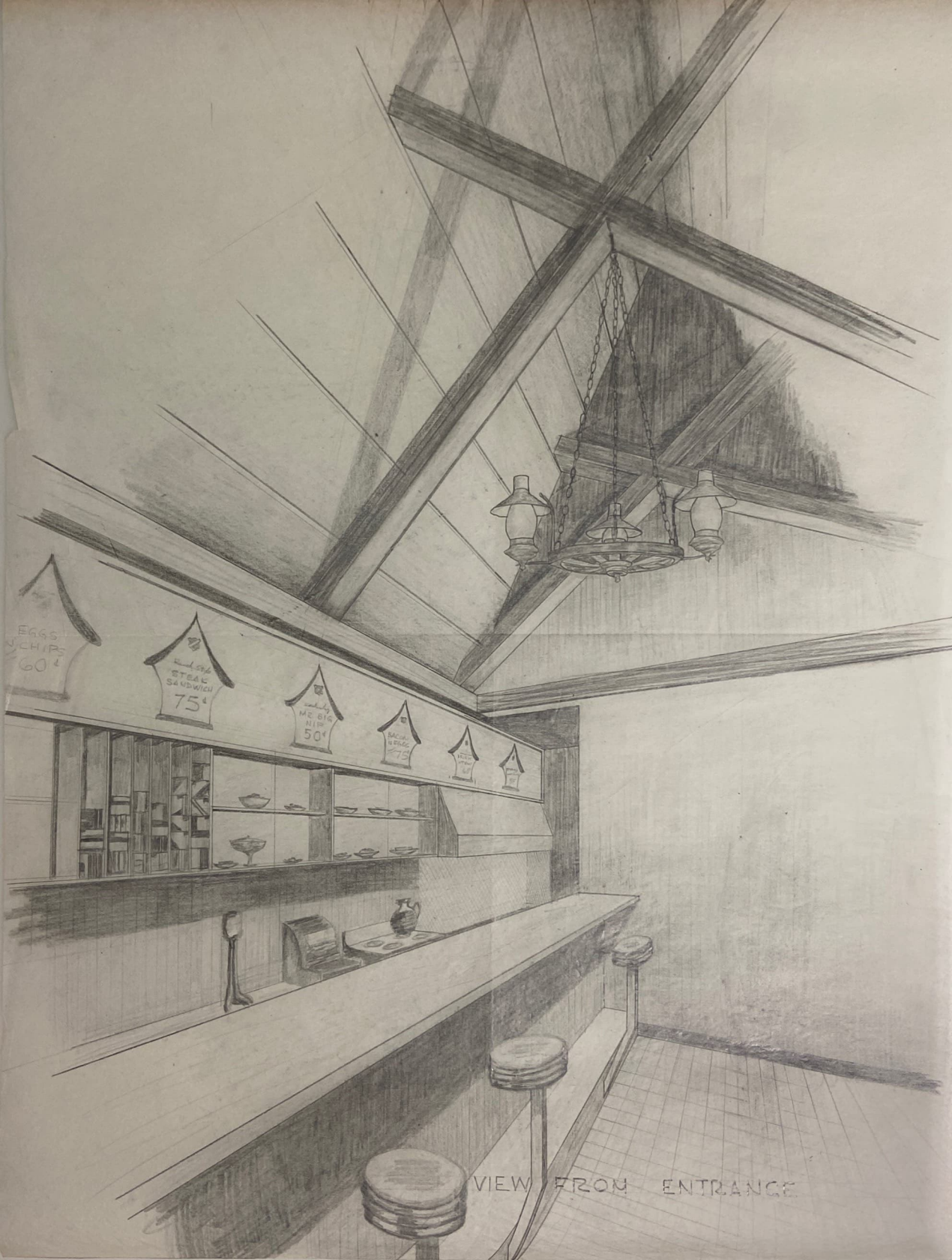
*Handwritten red notes:*  
A horizontal line.  
A wavy line.  
The word "Roof" written vertically.





VIEW FROM END WALL & COUNTER





EGGS  
CHIP  
60¢

STEAK  
SANDWICH  
75¢

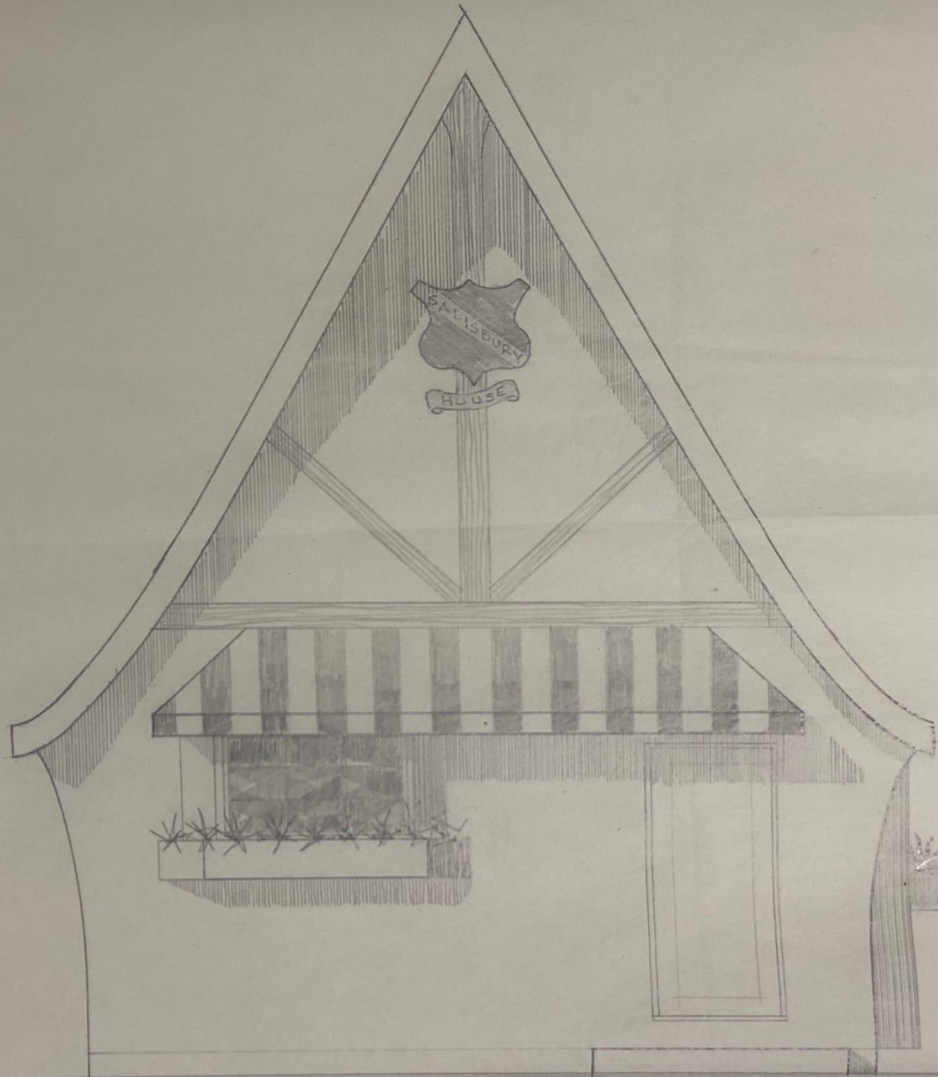
MEAT  
NIP  
50¢

MEAT  
NIP  
75¢

MEAT  
NIP  
75¢

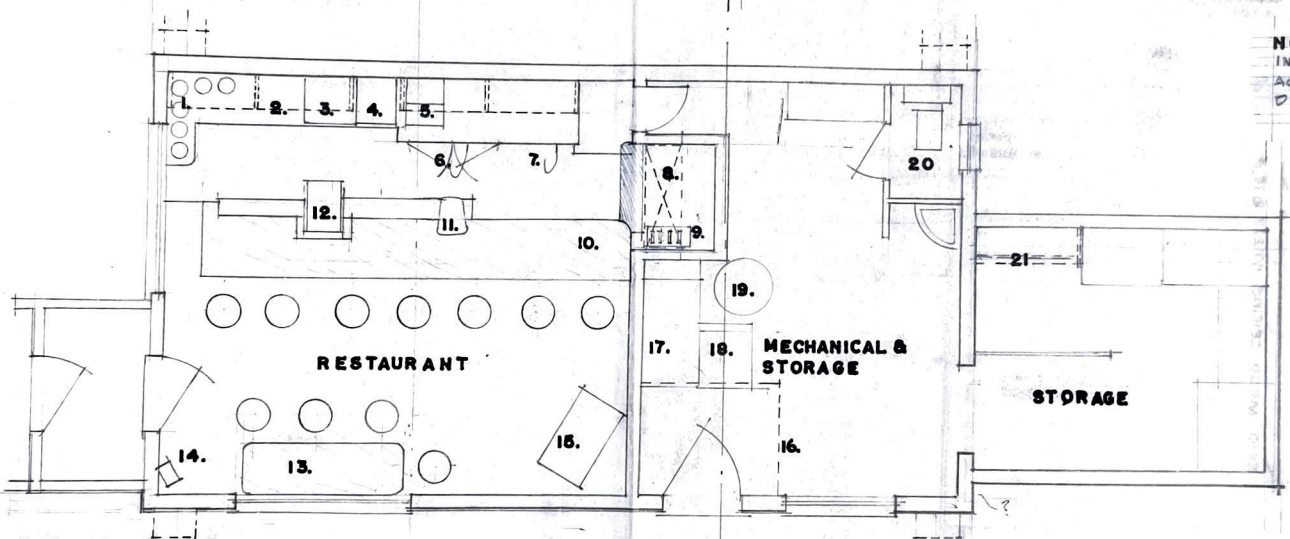
MEAT  
NIP  
75¢

VIEW FROM ENTRANCE



SALISBURY  
HOUSE

APPROX. OF STEEL SCISSOR TRUSS



**NOTE.**  
INTERIOR DIMENSIONS TAKEN  
ACCURATELY - NO EXTERIOR  
DIMENSIONS TAKEN.

**MEASURED FLOOR PLAN**  
**SCALE 1/4" = 1'-0"**

## LEGEND

- 1 COFFEE PERCS.
- 2 CREAM DISPENSER
- 3 POT BOILER
- 4 MILK DISPENSER
- 5 CASH REGISTER
- 6 REFRIG DOORS
- 7 STORAGE DRAWERS
- 8 GRILLE
- 9 TOASTER
- 10 ARBORITE COUNTER
- 11 COKE DISPENSER
- 12 DISHWASHER
- 13 FIXED TABLE 1'-6" x 6'-0"
- 14 TELEPHONE
- 15 WURLITZER (ON WHEELS)
- 16 FURNACE OVER ON 4 BRACKETS.
- 17 COMPRESSORS
- 18 REFRIG.
- 19 HOT WATER TANK
- 20 W.C.
- 21 COAT RACK