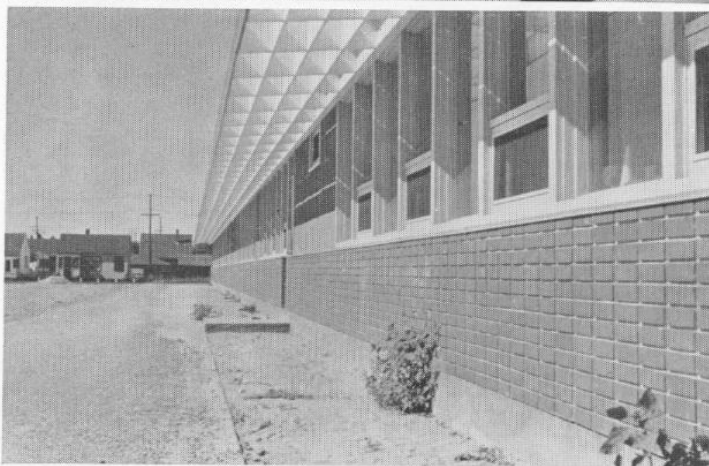


Typical classroom



Rear elevation



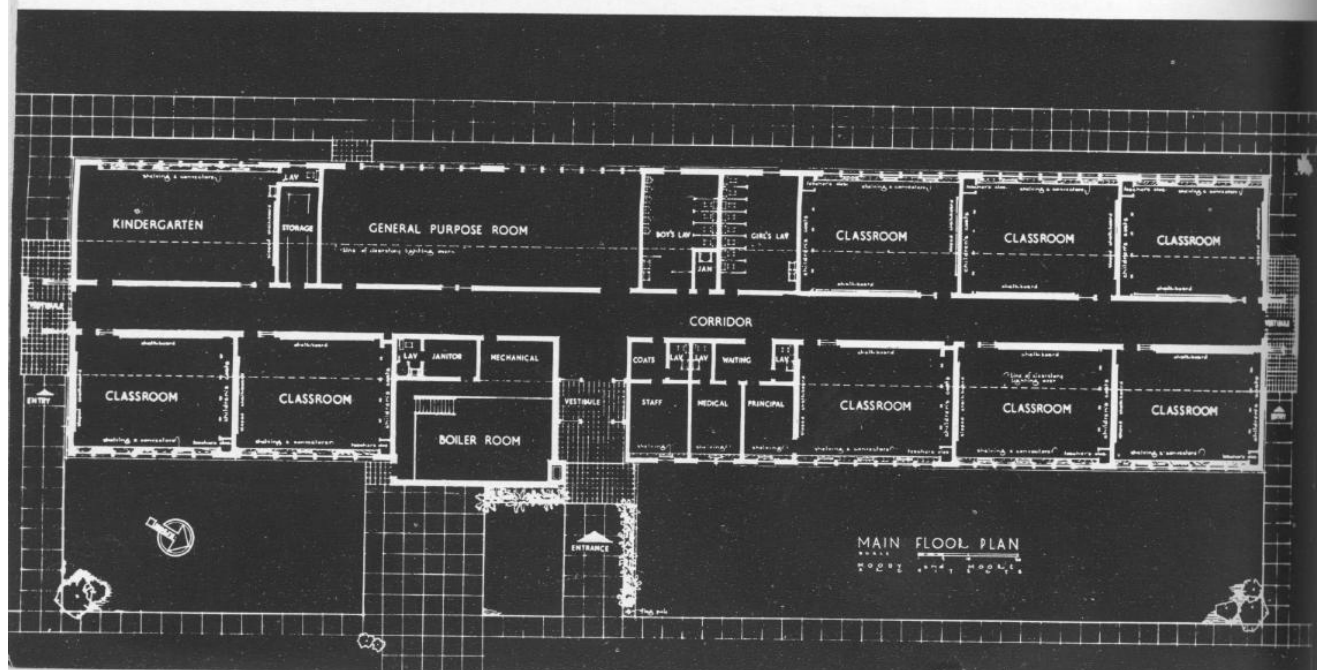
Main entrance

Harrow School, Winnipeg, Manitoba

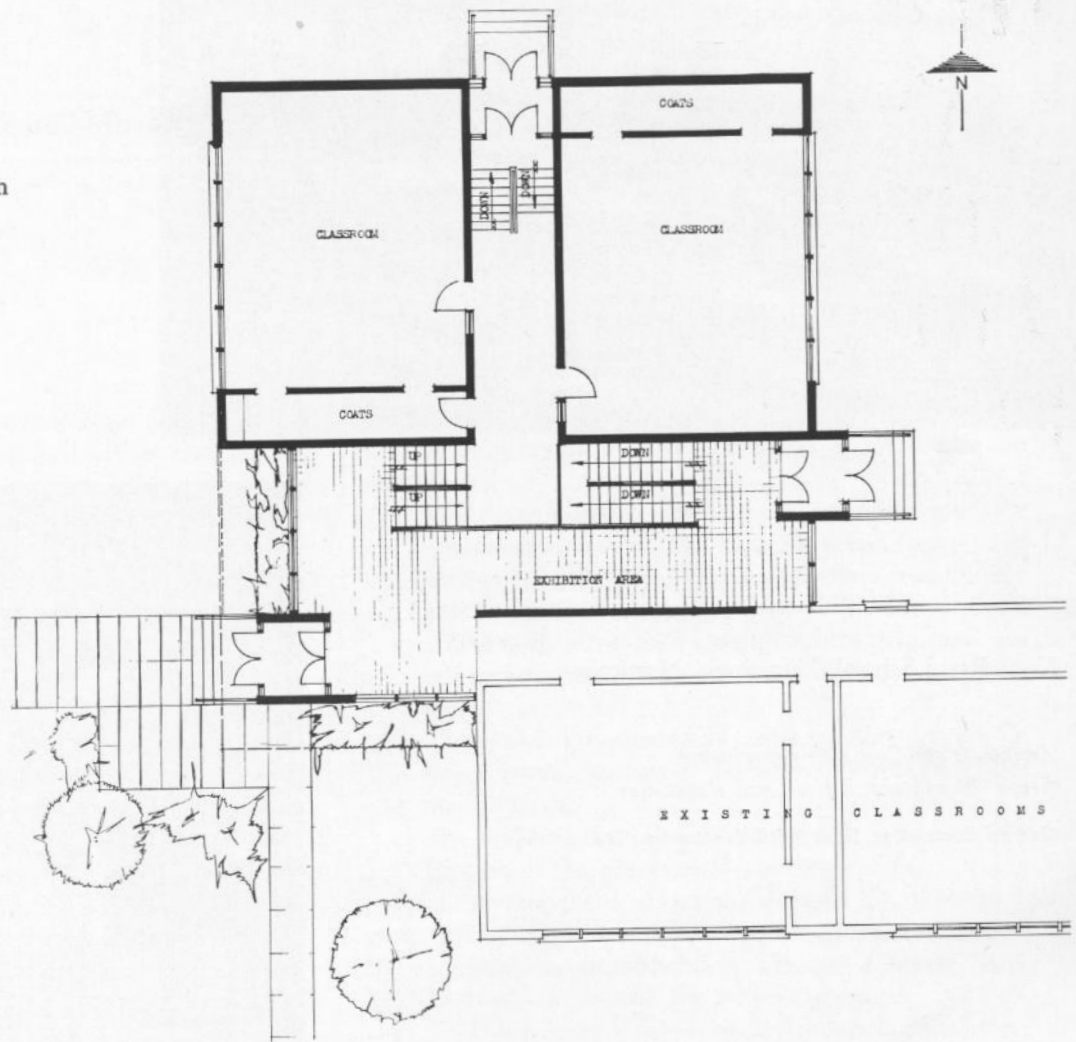
*Architects, Moody and Moore*

*Structural Engineers, Cowin & Co. Ltd.*

*General Contractors, Swanson Construction Co. Ltd.*



Ground floor plan



Addition to St. Ignatius Elementary School, Winnipeg, Manitoba

Architects, Northwood, Chivers, Chivers & Casey

General Contractors, Malcom Construction Co. Ltd.





JPS-GUTKIN & ASSOCIATES LTD.

# Kent Road School, Winnipeg, Manitoba

*Architects and Consulting Engineers  
Green, Blankstein, Russell and Associates*

*General Contractors, Peter Leith Construction Ltd.*

