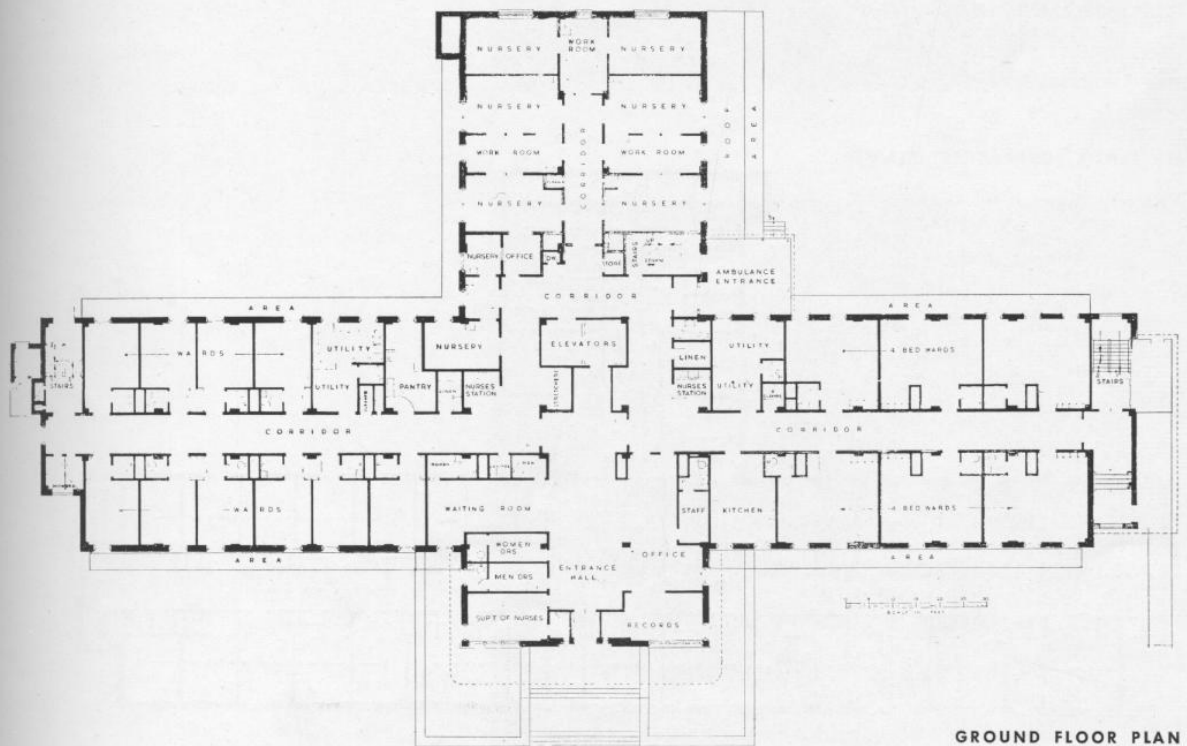


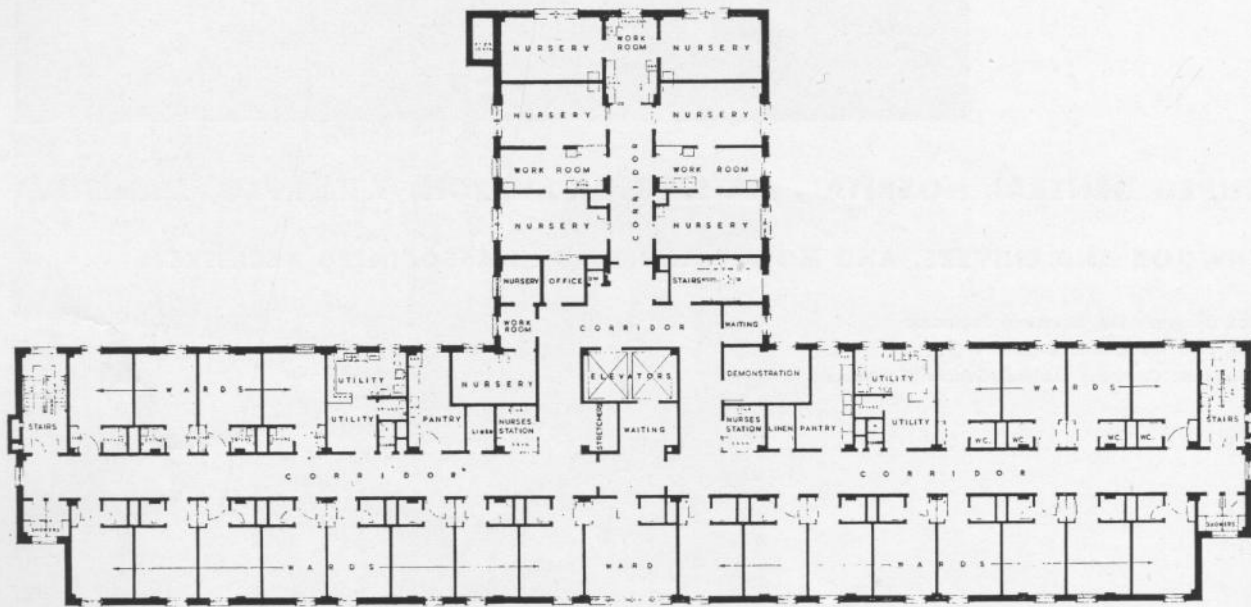
WINNIPEG GENERAL HOSPITAL, MATERNITY PAVILION, WINNIPEG, MANITOBA

NORTHWOOD AND CHIVERS, AND MOODY AND MOORE, ASSOCIATED ARCHITECTS

Cowin and Company Ltd, Structural Engineers
 E. H. Price, P.E., Mechanical Engineer
 Bird Construction Company Limited, General Contractors

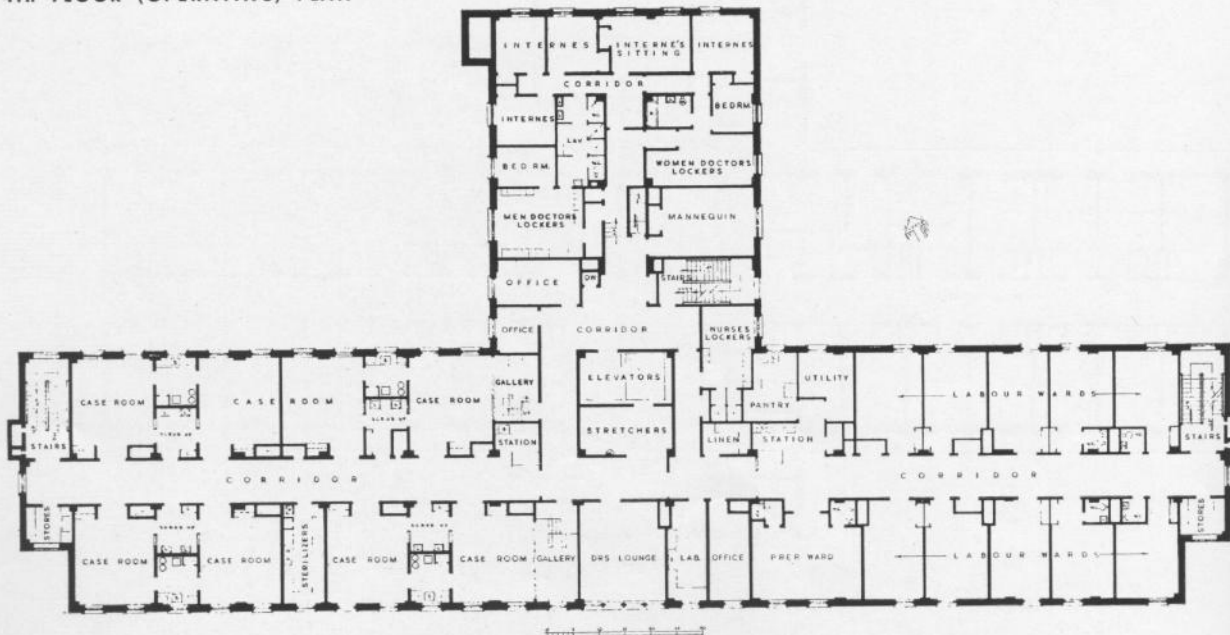


GROUND FLOOR PLAN



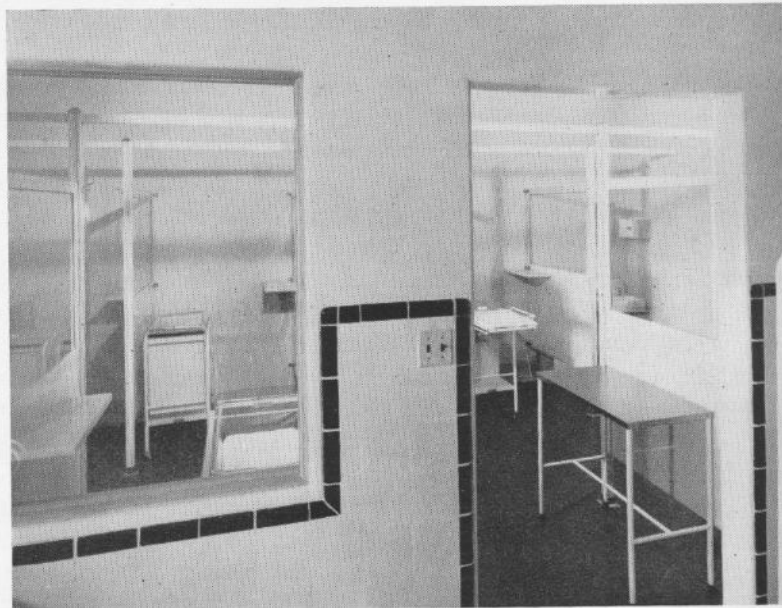
TYPICAL NURSING FLOOR PLAN

4th FLOOR (OPERATING) PLAN





2 BED ROOM



PART OF THE NURSERIES



CASE ROOM